



# Ilford Ursuline High School

## SCIENCE COLLEGE

### Sixth Form Prospectus

January 2010



Morland Road, Ilford, Essex, IG1 4JU Tel: 020 8554 1995 Fax: 020 8554 9537  
Email: [iuhs@ilfordursuline-high.redbridge.sch.uk](mailto:iuhs@ilfordursuline-high.redbridge.sch.uk)  
Website: [www.ilfordursuline-high.org.uk](http://www.ilfordursuline-high.org.uk)  
Headteacher: Mr J A Burke MTh BD PGCE NPQH





# Contents

	<b>Page No</b>
The School and our Mission Statement	3
Welcome from the Head Teacher	4
Our Sixth form from the Head of Sixth Form	5
Application Procedure	6
Sixth Form Curriculum	7
Sixth Form Facilities	8
Sixth Form Opportunities	9-10
Preparation for University	11
General Sixth Form Issues	12
Where are they Now?	13-14
Examination Results	15-17
The Governing Body	18
School Term and Holiday Dates	19
Sixth Form Subject Information	20-33
External Student Application Forms	34 onward



# Ilford Ursuline High School

## Science College

### The School

**Address:** Morland Road, Ilford, Essex, IG1 4JU  
**Tel No:** 020 8554 1995  
**Type of School:** Voluntary Aided Catholic Secondary School for Girls  
**Head Teacher:** Mr J A Burke MTh BD PGCE NPQH  
**Chair of Governors:** Mr Andrew Dodd

### Mission Statement

**The Ilford Ursuline High School is a community which serves God and the individual. In the light of gospel values we will support and nurture each other towards the fulfilment of our true potential.**

#### As a Catholic Science College we will:

- Raise the levels of attainment of all our learners in Science, Mathematics and ICT through effective and innovative teaching and learning.
  - Extend opportunities for sharing in a scientifically rich curriculum for the benefit of the wider diverse community in our neighbourhood.
  - Develop high quality working relationships with all our partners in order to foster a culture of continuous improvement, access and
- enthusiasm for specialist courses among our students and community neighbours.
  - Promote a culture of scientific inquiry leading to increased participation and interest in post-16 education and life-long learning
  - Help our students and partners face the challenges of 21<sup>st</sup> century life and work through our creative and imaginative approach to Science education.



# Welcome

Within the following few pages we hope to have captured something of the variety and richness of experience which young adults like yourself will meet if you choose to study at Ilford Ursuline High School.

Students who have spent their formative years at the school are already aware of the supportive and purposeful working environment within the school where all students are seen as individuals, each with her own strengths, potential and hopes. Those who come to us having successfully completed GCSE studies in other schools work with already established Ursuline students in a spirit of co-operation and shared motivation to reach the highest standards of attainment and progress.

As a Catholic school we welcome those of you who are of a different faith background. All that we ask in return is that you work to the best of your ability and that in the true spirit of *Serviam* you make a positive contribution to the strong sense of fellowship and co-operation that already exists within the school.

I hope you enjoy your visit and I look forward to receiving your application for a place at the school.

***Alex Burke***  
***Head Teacher***



The school provides a secure environment in which values of respect, thoughtfulness and courtesy flourish. One result is a community in which students enjoy learning, good behaviour is the norm and incidents of racism and bullying are very rare indeed.

Ofsted Report 2006

Governors and managers have a vision for the school which sensitively balances its strong Catholic identity with the needs of a mixed local community.

Ofsted Report 2006

## Our Sixth Form

The Ilford Ursuline High School Sixth Form is part of an extremely successful and over subscribed school. We set very high academic standards whilst providing a friendly and supportive atmosphere to ensure that each student is able to reach her full potential. Our school mission statement sums up the community spirit that is central to our Catholic tradition. The Sixth Form welcomes all students who are happy to support the Catholic ethos of our school and meet our entrance criteria.

Our excellent facilities include a Sixth Form Centre - Hume House, as well as first class computer suites. As a Specialist Science College we have gained additional funding to develop our science curriculum. Whatever your subject interests, you will find that our wide range of A level courses are taught by experienced Sixth Form teachers.

Sixth Form life at the Ursuline focuses on high academic achievement. However, we also ensure that our students are fully prepared for all aspects of university life, the world of work and the challenges of a changing world in the twenty first century. Our curriculum includes a full and varied personal, social and health education programme, community service, religious education, information technology



**Visit to the European Parliament**

training, physical education, careers education and guidance, post-16 work experience, including opportunities to work abroad, clubs and societies. The list is endless!

If you are hard working and ambitious, we look forward to welcoming you to our Sixth Form Community. Please note the criteria required for entry and the timetable for applying to the Ilford Ursuline High School Sixth Form.

***Ms M Warren***  
**Head of Sixth Form**

They are articulate, friendly and polite and perceive the school as a harmonious, multicultural community.

Ofsted Report 2006

# Application Procedure

## Entry Criteria

The school expects to have 90 students in Year 12. Preference will be given to existing students of the school. The minimum number of external students the school expects to admit, ie the school's admission number is 40.

### All students are required to

- Make a commitment to the Catholic ethos of the school
- Have a minimum of 5 A\* - C grades at GCSE Level and a minimum grade C in each of English Language and Mathematics
- Meet the required grade for each subject (see course subject details)
- Provide a supportive school reference

Applicants and their parents will be invited to visit the school for advice on available options and entry requirements for different courses.

### Oversubscription criteria for external students

In the event of oversubscription, the following priority order will be applied:

1. Looked after children, that is children in public care
2. Average point score at GCSE
3. Shortest measured walking distance from home to the main entrance of the school

## Timetable for Application

- Our Sixth Form Preview evening will take place on Thursday 28 January 2010 from 6.00pm to 8.30pm. All prospective applicants are welcome to meet staff, learn about AS and A2 courses, see Hume House and have a tour of the whole school.
- Sixth Form prospectuses, subject information and application forms for entry in September 2010 will be available from Thursday 28 January 2010 onwards from the Ilford Ursuline High School, Morland Road, Ilford, Essex, IG1 4JU or can be downloaded from the website.
- In order to ensure a place, particularly on a popular course, it is advisable to complete and submit your application form by mid-February 2010.
- Ilford Ursuline students should complete a subject choice form and pass it to the Head of Sixth form.
- **Students applying from other schools should complete the external student application form and pass it on to their referee who will return it to the school.** Students who are successful in the first stage of the application process will be invited to attend a meeting from March onwards.
- Please send a stamped and addressed envelope for your application forms to be acknowledged.



The school displays a strong commitment to inclusion and equality of opportunity in all aspects of its work, not least in the successful integration of non-Catholic students.

Ofsted Report 2006

# Sixth Form Curriculum



Most students will choose four AS subjects to study in Year 12, but some will study three. Students who gain between 375 and 400 points at GCSE will study three subjects at AS level. Students who gain between 400 and 500 points at GCSE will study four subjects at AS level. Students who gain above 500 points at GCSE may choose to study five subjects at AS level. Most will select three of their subjects to continue with at A2 in Year 13 but exceptional students may choose to continue with four subjects. Subject selection is a very important decision as subject choice obviously affects further education and career opportunities.

All students will study some Religious Education along with PSHE and have the opportunity to take part in the Year 12 Enrichment Programme where a variety of courses and activities are offered. Some students may also choose the Extended Project Qualification in a chosen subject area.

## The subjects offered at AS and A2 in 2010 are as follows:

**Please note: All subjects and subject combinations are subject to numbers and staffing. Students will need to choose a combination of subjects with one subject only from each option block.**

Option Block A	Option Block B	Option Block C	Option Block D
Chemistry	Biology	Art	Biology
Economics and Business	History	Chemistry	Economics and Business
English	Physics	ICT	French
Mathematics	Psychology	Government and Politics	Mathematics
Sociology		Psychology	Philosophy and Ethics
		Further Mathematics	Sociology

Enrichment Option
Community Service
Community Sports Leader Award
Cooking on a Shoestring Budget
Film Club
Fitness
Work Experience
Critical Thinking

Students' care, guidance and support are good. Students from a wide variety of backgrounds are assessed carefully on entry and their needs are very well supported. New sixth form students are offered good induction.

# Sixth Form Facilities

## Hume House



Our Sixth Form centre, Hume House, was officially opened in December 1999 by Thomas McMahon, Bishop of Brentwood and Cherie Booth QC.

Hume House is solely dedicated to Sixth Form use. Year 12 and Year 13 each have a common room with soft seating, low tables and full kitchen facilities. In addition, there are lockers and Hume House also contains washroom facilities with a

shower. The common rooms provide a valuable social area for chat and relaxation, where music may be played outside of lesson times.

We also offer a Sixth Form study area equipped with 30 computers that have full Internet access. In addition to this, students have access to the main school library during study periods.

Students' personal development and well-being are good. Their enjoyment of lessons is reflected in their keenness to learn, their good behaviour and their high levels of attendance.

Ofsted Report 2006



New York February 2009

Students welcome the opportunity to participate in enterprise projects and enjoy a range of enrichment activities in sports and the arts.

Ofsted Report 2006

## Sixth Form Opportunities

### Extra-Curricular Activities

Sixth Formers are encouraged to enhance their studies by getting involved in a varied and exciting programme of clubs and activities. We have an excellent Orchestra and Choir and provide many opportunities for public performance. Instrumental tuition is available from visiting specialist teachers. Sixth Formers have the opportunity to take part in sporting activities such as netball and tennis and make a significant contribution to the major annual drama production. Other extra-curricular activities on offer include the Community Sports Leadership Award, the Amnesty International Club and Green Enterprise Club. The school also takes full advantage of the opportunities to visit concerts, theatres, exhibitions and museums in central London.

### Community Service

As an Ursuline School our motto is 'Serviam', 'I Will Serve'. One area in which Sixth Form students are given an opportunity to put this motto into practice is in the community service programme. This service may take many forms, from helping students in the Ursuline Preparatory School with their reading, to volunteering to help in the High School Library Resource Centre. All our community

service activities give Sixth Form students the opportunity to help others in the school community and take our 'Serviam' motto seriously. In Year 12 students work together to organise a Christmas Party for senior citizens in our local community. This yearly event is always a tremendous success and much appreciated by the guests who attend.

### Young Enterprise

Young Enterprise is a national scheme which provides students with a valuable opportunity to prepare for working life by running their own company. Students elect a board of directors from amongst their peers, raise share capital and produce and market a product or service of their own choice. At the end of the year, they present a report and accounts to shareholders evaluating how they have undertaken their responsibility.

### Trips and Visits

There are a wide variety of trips and visits both at home and abroad. These include visits to the theatre and museums as well as our two annual foreign trips to New York and to Brussels.

## Green Enterprise Club

This is a club which aims to raise awareness of a range of social and economic issues by holding events such as an Environmental Awareness Day. Students are responsible for managing the club and chair meetings on a rotation basis to develop management skills.

## Community Sports Leadership Award

The CSLA is offered to all Year 12 students who wish to obtain a nationally recognised coaching qualification from the Sports Trust as well as developing valuable leadership skills.

## Personal, Social and Health Education

The PSHE programme followed by Year 12 and Year 13 students is an important area of Sixth Form curriculum. The course covers a wide range of topics from moral and spiritual issues to practical help with UCAS applications, interview preparation and careers advice. It is also intended to support the learning going on in other areas of the curriculum and provide a time for students to discuss problems and areas of concern and set targets for the future. In addition to one period per week of PSHE, there is further tutorial time available in the week which is used to prepare and discuss assemblies based on moral and spiritual themes.

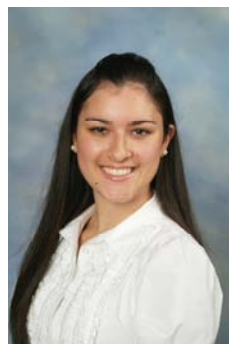
## Sixth Form Council

The Sixth Form Council consists of the Head Girl, Deputy Head Girl and representatives from each of the tutor groups. The council meets regularly to discuss issues raised by Sixth Formers, to organise social activities and put forward ideas to the Head of Sixth Form relating to the development of the Sixth Form. Individuals are also elected to the Council to develop and implement plans relating to particular areas of Sixth Form life, such as community work and academic development. These are important positions of responsibility that provide students with an opportunity to liaise with the School's senior management team, exercise effective citizenship and develop excellent communication and leadership skills.

portunity to liaise with the School's senior management team, exercise effective citizenship and develop excellent communication and leadership skills.

## Sixth Form Prefects

Sixth Form students are important members of the school community and as such have



many privileges. As senior students they are expected to take on certain responsibilities to help ensure the smooth running of the school. At the end of Year 12 students are elected into positions as Head Girl, Deputy Head Girls, Senior Prefects and Prefects. These students perform a variety of duties in school, such as helping form tutors with lower school classes. In addition, all sixth formers assist staff at break and lunch time and represent the school at a variety of functions. Such responsibilities are an important part of Sixth Form life and help students to develop their organisational skills as well as proving themselves to be reliable role models for younger students.



Such responsibilities are an important part of Sixth Form life and help students to develop their organisational skills as well as proving themselves to be reliable role models for younger students.



Such responsibilities are an important part of Sixth Form life and help students to develop their organisational skills as well as proving themselves to be reliable role models for younger students.



The appointment of prefects and opportunities to undertake duties around the school give students a developing sense of community responsibility in which providing help for others is recognised and valued.



New York February 2009

### Post-16 Work Experience

Every student is given the opportunity to participate in work experience. The school works closely with the Redbridge Business Education Partnership who obtain relevant work placements for our students.

### European Work Experience

Modern Foreign Language A level students have the opportunity to participate in work experience abroad during the first year of their course. This is organised through the company Acorn Educational Exchanges, which has been successfully organising work placements abroad for Sixth Form students since 1993, thus providing an excellent opportunity for those studying languages to develop their language skills and confidence in a working environment.

Students apply independently to the organisation, who will find them a work placement of their choice, arrange fully supervised travel to and from their destination and, depending on their preference, find suitable half board accommodation in a youth hostel (also fully supervised) or with an exchange family. Typical work placements include shops, offices, public buildings, hotels and restaurants. All necessary documentation, insurance and transportation to work placements will be provided, as well as a social and excursion programme.

## Preparation for University and Employment

Dates for students to choose from are currently during February, April, July or October. Although the work placement will mainly be in school holiday time, there may a slight overlap with the end of term, from which participating students would be excused.

A formal certificate will be issued at the end of the placement, which may be offered to future employers or college / university authorities.

### UCAS Preparation

A thorough programme of university guidance is provided throughout the Sixth Form. This begins in Year 12 with talks from university admissions tutors, and from a Redbridge careers adviser on the possible routes through Higher Education. Students are closely guided throughout the UCAS process and are issued with guidance on how to complete a personal statement. All students will have an opportunity for at least two personal interviews with a careers adviser and with a senior member of staff.

Students are well prepared for their future careers and economic well-being. One student said that the duties they undertake, 'help our communication skills for university.'

Ofsted Report 2006

## General Sixth Form Issues



Schools Question Time

Students feel secure and well supported. One said, 'There are always people you can talk to if you have a potential problem.'

Ofsted Report 2006

### The School Day

Registration	8.40 am
Form time/Assembly	8.45am
Period 1	9.00 am
Period 2	10.00 am
Break	11.00 am
Period 3	11.20 am
Lunch	12.20 pm
Period 4	1.20pm
Period 5	2.20 pm
End of Day	3.20 pm

### Lunch facilities

The school dining hall is open from 8.00am for breakfast and during break for snacks and drinks and of course at lunch time, when Sixth Formers have 'front of the queue privileges!' In addition, Sixth Form students have kitchen facilities in the common rooms. Lunch is available for all Sixth Form students in the dining hall, although students may be off site during lunchtime.

### Dress Code

Sixth Form students are seen as senior members of the school community and as such role models for younger pupils. They are expected to present a smart and business-like appearance. The dress code consists of:

- black suit (jacket and skirt or trousers)
- white blouse with a collar
- black v-necked jumper or cardigan
- black shoes that are suitable for school
- discreet jewellery is acceptable



# Where are they now?

## Last Year's Leavers

Surname	Forenames	Inst Name	Course Placed
Abbas	Zara	BRUNL	Financial Mathematics
Acquah	Jessica	BIRM	Accounting and Finance
Acquah-Arhin	Krystle	ESSEX	Politics and Modern Languages
Acquaye	Irene	MANU	Dentistry (BDS first-year entry)
Adeoye	Oluwatosin	WARWK	Law and Sociology (4 years)
Altaf	Sara	QMUL	Mathematics with Business Management
Amin	Jigisha	UCL	Biomedical Sciences
Anthony	Catherine	LVRPL	Combined Honours
Aslam	Faseeha	SOPH	Master of Pharmacy (4 years)
Babatunde	Omobolanle	MEDSP	Pharmacy
Baporia	Safura	UCL	Physics
Bocarro	Melissa	BRUNL	International Politics (4 year Thick SW)
Brown	Natasha		Gap Year
Butt	Maria	KCL	Pharmacy (Master of) (4 years)
Cao	Yuping	MANU	Actuarial Science and Mathematics
Chana	Rikita	WEST	Law
Channa	Sandeep	CITY	Law
Choudhury	Anisa	KENT	Accounting & Finance
Chouhan	Gitanjali	KING	Law
Clarke	Josephine	NOTTM	American and English Studies
De Lucia	Isabella	UAL	Fashion Management
Dhutti	Karen	LONMT	Early Years Teaching
Digpal	Satveer		Gap Year
Duraisamy	Jivyananthini	LSE	Mathematics and Economics
Edwards	Chantelle	BRUNL	Psychology (4 year Thin SW)
Farukh	Bushra		Continuing at Ilford Ursuline
Fernandes	Melanie	WEST	Architecture
Fernando	Naleesha	KEELE	Astrophysics with Science Foundation Year
Harwood	Nicole	LSE	Social Policy
Holc	Devan	BRUNL	Drama and Film & Television Studies
Hossain	Zafren	WEST	Business
Hussain	Faezah		Gap Year
Ike	Sonia	LINCO	Health Science (Medicine)
Jain	Smriti		Medicine (New Zealand)
Janjua	Amanpreet	ARU	Early Childhood Studies
Jordan-Akiwumi	Angel		Gap Year
Joseph	Keisha	KEELE	Midwifery with Health Foundation Year
Kapasi	Mariyah	BRUNL	Finance and Accounting
Khan	Andleab	GOLD	Education, Culture and Society
Kirkland	Sarah	KENT	Psychology
Laing	Natasha		Art College



## Where are they now?

### Last Year's Leavers

Surname	Forenames	Inst Name	Course Placed
Levesley	Siobhan	ABWTH	Information & Library Studies
Lynch	Sinead	BRISL	Engineering Design with Study in Industry
Madadeniya	Purnima	QMUL	Mathematics
Maham	Madeeha	LONSB	Architecture
Mirza	Esham	SOAS	Study of Religions
Mohammad	Hana	SOPH	Master of Pharmacy (4 years)
Munawar	Muneeba	KCL	Pharmacy (Master of) (4 years)
Nankoo	Melissa	KCL	Pharmacy (Master of) (4 years)
Narad	Natasha	BRUNL	Law (4 year Thick SW)
Nasrullah	Anam	SOPH	Master of Pharmacy (4 years)
Newnham	Ella		Gap Year
Nkem-Ike	Adaeze	MEDSP	Community Pharmacy Practice
Nwodo	Kariba	WEST	Politics
Obisesan	Olufunto	NOTRE	Quantity Surveying and Construction Commercial Management
Okorodudu	Catherine	BCITY	Estate Management Practice
Olukanmi	Remi	KENT	Psychology
Osei-Tutu	Vivian	NOTRE	Quantity Surveying and Construction Commercial Management
Panjwani	Kavita	WEST	Cognitive Science
Patel	Kulsoom		Gap Year
Patel	Nadiyah	BRUNL	Business and Management (Marketing)
Patel	Sana	KCL	German
Patel	Shrina	SGEO	Diagnostic Radiography
Premannandan	Catharina	ESSEX	Psychology
Rahman	Afshana	QMUL	Mathematics with Finance & Accounting
Raje	Hafsah	WEST	Architecture (Interior Design)
Rasheed	Shahla	QMUL	Mathematics, Statistics and Financial Economics
Rashid	Asna	LONSB	Electrical and Electronic Engineering
Rengasamy	Emma	QMUL	Medical Genetics
Sam Selvaratnam	Sylvia	KCL	Biomedical Science
Seago	Victoria	RHUL	English
Shoaib	Tayyeba		Gap Year
Singh	Jaspreet	CITY	Mathematical Science (3 years or 4 year SW)
Subash	Suramya	MIDDX	Computer Science
Suntharalingam	Jalini	BRUNL	Foundations of Information Technology
Thanabalasingam	Thiviya	CITY	Economics/Accountancy
Thomas	Melanie	BRUNL	Financial Computing
Visgnanamoorthy	Vinoththa	LONMT	Sciences Extended Degree - Biology, Chemistry, Health, Psychology
Zahid	Madiha	WEST	English Literature



## Results by Subject 2009

### Year 13 Results

#### A2 Level Results

Subject	Entries	A	B	C	D	E	U
Art & Design	8	5	3	0	0	0	0
Biology	25	2	9	6	3	4	1
Business Studies & Economics	19	0	5	7	7	0	0
Chemistry	21	2	11	6	1	0	1
Chinese	1	1	0	0	0	0	0
Drama	4	0	2	2	0	0	0
English Literature	14	4	5	5	0	0	0
French	6	2	1	2	1	0	0
German	3	1	1	1	0	0	0
History	7	2	4	0	1	0	0
Information Technology	11	0	2	6	3	0	0
Italian	1	0	1	0	0	0	0
Mathematics	28	13	9	3	2	1	0
Media Studies	9	1	1	6	1	0	0
Physics	10	1	4	1	3	1	0
Politics	11	4	3	1	2	1	0
Psychology	27	7	6	9	5	0	0
Religious Studies	11	2	7	2	0	0	0
Sociology	23	7	11	5	0	0	0
<b>TOTAL</b>	<b>239</b>	<b>54</b>	<b>85</b>	<b>62</b>	<b>29</b>	<b>7</b>	<b>2</b>

#### AS Level Results (for subjects not continued to A2 level)

Subject	Entries	A	B	C	D	E	U
Art & Design	2	1	1	0	0	0	0
Biology	8	0	1	0	4	3	0
Business Studies & Economics	13	2	2	2	2	4	1
Chemistry	11	0	0	2	2	5	2
Critical Thinking	8	2	2	2	2	0	0
Drama	1	0	0	0	1	0	0
English Literature	5	1	1	3	0	0	0
French	3	1	0	2	0	0	0
General Studies	7	0	1	0	3	3	0
Geography	1	0	0	0	0	1	0
Gov. & Politics	2	0	1	0	1	0	0
History	3	0	1	0	1	0	1
ICT	5	1	1	0	2	1	0
Mathematics	4	0	1	0	2	1	0
Mathematics (Further)	7	5	2	0	0	0	0
Media Studies	1	0	1	0	0	0	0
Music	1	0	0	1	0	0	0
Physics	2	0	0	2	0	0	0
Psychology	10	0	1	2	2	3	2
Religious Studies	1	0	0	1	0	0	0
Sociology	1	0	1	0	0	0	0
<b>TOTAL</b>	<b>96</b>	<b>13</b>	<b>17</b>	<b>17</b>	<b>22</b>	<b>21</b>	<b>6</b>

## Results by Subject 2009

### Year 11 GCSE Level Results

Subject	Entries	A*	A	B	C	D	E	F	G	U	A*-C	A*-G
Art & Design	23	9	9	3	2	0	0	0	0	0	23	23
Biology	20	3	7	6	4	0	0	0	0	0	20	20
Chemistry	20	3	8	9	0	0	0	0	0	0	20	20
D&T Graphic Products	38	1	4	14	11	7	0	1	0	0	30	38
D&T Textiles	9	0	3	2	2	2	0	0	0	0	7	9
Drama	23	7	5	5	3	3	0	0	0	0	20	23
English Language	88	3	17	26	27	9	6	0	0	0	73	88
English Literature	71	4	18	25	19	5	0	0	0	0	66	71
French	30	8	6	8	8	0	0	0	0	0	30	30
German	7	2	3	0	0	2	0	0	0	0	5	7
Health & Social Care	8	0	0	1	5	2	0	0	0	0	6	8
History	41	4	6	12	10	6	2	1	0	0	32	41
ICT	39	2	4	17	9	5	2	0	0	0	32	39
Mathematics	89	11	19	22	22	6	7	1	1	0	74	89
Music	10	2	2	3	1	1	0	1	0	0	8	10
Physics	20	8	4	7	1	0	0	0	0	0	20	20
Religious Studies	74	10	18	25	12	6	2	1	0	0	65	74
Science: Core	68	4	3	18	26	11	4	2	0	0	51	68
Science: Additional	69	4	2	16	31	8	7	1	0	0	53	69
Spanish	1	1	0	0	0	0	0	0	0	0	1	1
Sport/PE	8	0	0	0	1	3	3	1	0	0	1	8
Statistics	20	8	7	3	1	1	0	0	0	0	19	20
ASDAN	6	0	0	4	0	0	2	0	0	0	4	6
<b>TOTAL</b>	<b>782</b>	<b>94</b>	<b>145</b>	<b>226</b>	<b>195</b>	<b>77</b>	<b>35</b>	<b>9</b>	<b>1</b>	<b>0</b>	<b>660</b>	<b>782</b>



Visit to the European Parliament

..at GCE A level .....  
in 2006 results were  
outstanding, with over  
three-fifths of candi-  
dates attaining grades  
A or B.

Ofsted Report 2006



## GCSE Results 2009

	<b>Ilford Ursuline 2009</b>	<b>Redbridge 2008</b>	<b>National 2008</b>
Number of students on roll in January	90		
Students entered for 5 or more GCSEs	98.9%		
Students achieving 5 or more A*-Cs	78.9%	73.8%	65.3%
Students achieving 5 or more A*-Cs inc English and Mathematics	73.3%	63.9%	47.6%
Students achieving 5 or more A*-Gs	97.8%	95.9%	91.6%
Students achieving at least 1 entry level or GCSE	98.9%	98.8%	98.6%
Average point score per student	388.9 pts	420.9pts	390.2pts

## A Level Results 2009

	<b>Ilford Ursuline 2009</b>	<b>Redbridge 2008</b>	<b>National 2008</b>
Number of students aged 17+	78		
Number of students entered for 2 or more GCEs	78		
Average point score of students	812.5pts	718.1pts	740.0pts

## Destinations of Students (provisional)

<b>Year</b>	<b>Y11</b>	<b>Y12</b>	<b>Y13</b>
School or further education	89	86	72
Employment	1	0	0
Training	0	0	0
Gap Year (Y13 only)	n/a	n/a	5
Any other category	0	0	0



# The Governing Body

The school is in the trusteeship of the English Province of the Roman Union of the Order of Saint Ursula.

The Chair of Trustees is Sister Maureen Moloney OSU

## **Foundation Governors:**

Mr Andrew Dodd- Chair of Governors  
Mrs Deneice Grant - Vice-Chair  
Sister Anne Benyon OSU  
Miss Sarah Begin-McCarthy - parent  
Mr Robert Caldiera - parent  
Mr Paul Dobson  
Mr John Laviniere - parent  
Sister Margaret Rolfe OSU  
Mrs Angela St Ville - parent  
Father John Tuohy

## **LEA Representative Governors:**

Cllr Mrs Sue Nolan

## **Parent Governors:**

2 to be elected

## **Staff Governors:**

Mr George Irwin  
Mr Mark Smith  
Ms Christina Thatcher

## **Headteacher Governor:**

Mr James Alex Burke

## **Clerk to the Governors:**

Ms Kim Davison



# **School Term and Holiday Dates 2010/2011**

## **(Provisional)**

### **Autumn 2010**

**Term**                      **Thursday 2 September - Friday 22 October**

**Half-Term**                **Monday 25 October - Friday 29 October**

**Term**                      **Monday 1 November – Friday 17 December**

### **Spring 2011**

**Term**                      **Tuesday 4 January - Friday 18 February**

**Half-Term**                **Monday 21 February - Friday 25 February**

**Term**                      **Monday 28 February - Friday 8 April**

### **Summer 2011**

**Term**                      **Tuesday 26 April - Friday 27 May**  
**(Bank Holiday 2 May)**

**Half-Term**                **Monday 30 May - Friday 3 June**

**Term**                      **Monday 6 June - Friday 22 July**

**Please note: 22 April 2011 is Good Friday**  
**25 April 2011 is Easter Monday**

In addition there will be 5 non-contact days for in-service training and school related activities when students will not be in school. These days will be selected by the Governing Body from within the term dates.