



ILFORD COUNTY HIGH SCHOOL



ACHIEVING EXCELLENCE TOGETHER IN THE 21ST CENTURY



## ILFORD COUNTY HIGH SCHOOL

Fremantle Road  
Barkingside  
Ilford  
Essex  
IG6 2JB

Tel: 020 8551 6496  
Fax: 020 8503 9960  
Email: [enquires@ichs.org.uk](mailto:enquires@ichs.org.uk)

Designed & Produced by Cleverbox Education t: 0203 466 7222 www.cleverbox.co.uk

# SIXTH FORM PROSPECTUS

ILFORD COUNTY HIGH SCHOOL



Fremantle Road  
Barkingside  
Ilford  
Essex  
IG6 2JB  
Tel: 020 8551 6496  
Fax: 020 8503 9960  
Email: [enquires@ichs.org.uk](mailto:enquires@ichs.org.uk)





"Ilford County High School is an outstanding school:  
an extremely strong work ethic permeates all activity in the school."

OFSTED 2007

# WELCOME TO ILFORD COUNTY HIGH SCHOOL



The Sixth Form at Ilford County High School offers you the opportunity not only to experience an academic education of the highest standard, but also to become a responsible and productive member of a community which has a concern for others and an interest in social, cultural and moral issues. We hope that you will take advantage of the opportunities the Sixth Form offers for personal development and taking responsibility, and that, by the time you leave us, you will be ready to progress to a satisfying and rewarding career in higher education and employment.

Our pursuit of excellence is combined with care for the individual. All students are valued and supported. We are a friendly, happy school with high expectations and there are excellent relationships and strong mutual trust and respect between staff and students. Of course, one of the best ways of finding out about a school is to talk with the students. I am confident that, when you visit us, you will meet students who clearly enjoy life in the Sixth Form and who revel in the learning opportunities provided. The following sections of this brochure explain in greater detail what the Sixth Form has to offer you.

We look forward to meeting you.

**S I Devereux** – Headteacher



The Sixth Form Team is committed to supporting all boys in Years 12 and 13 in their progress through the Sixth Form. Although the priority is academic attainment, it is important that students feel happy and at home in the school environment. It is our job to ensure that this is achieved. To this end, not only do we monitor the boys' academic progress, we also offer friendly personal help and advice. We have a well-developed UCAS application programme, which is tailored to the individual needs and aspirations of each student. Ilford County High School Sixth Form is a great environment in which to study and both the Sixth Form Team and the students themselves will be delighted to talk about this with you.

**Colin Jenkins** – Head of Sixth Form



## JOINING THE SIXTH FORM

Our existing students are normally offered a place in the Sixth Form. However, all must achieve the minimum grade requirements for their proposed courses. A very small number of students may not be invited into the Sixth Form if they have a poor record of work and behaviour.

Approximately 30 external applicants are admitted to the Sixth Form each year. If you are applying from another school, you will need to submit an application form. We will ask your present school for a reference. If the reference is positive, we will invite you to visit the school to discuss your application. Places will then be offered on the basis of this discussion, provided we have spaces in the subjects you wish to study. No external student is admitted to the Sixth Form without visiting the school and meeting a senior member of staff.

Following publication of GCSE results in August, the places of all students will be confirmed providing they have met the academic entry criteria.

## REPORTING SYSTEMS, CONSULTATION EVENINGS, PUPIL MONITORING

There is a Consultation Evening in each year in the Sixth Form for both students and parents to meet with tutors to discuss progress. These evenings normally take place in November.

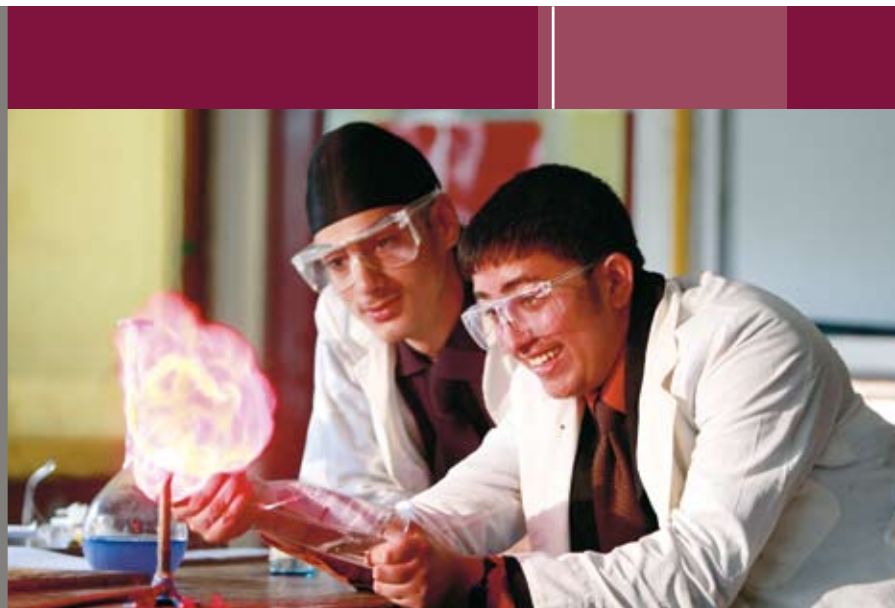
Full written reports by subject staff are sent to parents in April of Year 12. However, in the autumn and spring terms of each year, Academic Progress reports are sent out, which give an overview of each student's progress.

Students are closely and continuously monitored throughout their time in the Sixth Form. Attendance in all lessons is recorded, and there is a half-termly review of each student's progress with their form tutor. In addition to these regular meetings, students will have a formal Academic Review regarding their progress twice a year, usually in November and March. Students whose progress gives cause for concern will initially be monitored by their tutor, possibly with parents involved. Should problems persist then they will be formally monitored on a month-by-month basis.

Academic targets are set at the beginning of the year and these are monitored closely. Success in reaching these targets is a key criterion for further progression.



OFSTED 2007





“This is an outstanding sixth form.”

PAGES 2-3

## PRIVATE STUDY

The Sixth Form is a period of transition during which you should develop the ability to study independently, as you will be expected to do when you go to university or other institutions of higher education. This skill is also highly valued by employers since it means you can be trusted to work on your own without close supervision. Activities such as preparing texts for discussion in class, writing up experiments and doing past papers to a time limit without supervision are typical of private study in the Sixth Form.

The school provides students with an area for private study to be undertaken in silent and conducive conditions. The Learning Resource Centre is well resourced with a dedicated Sixth Form study space. The upper floor is reserved for Sixth Form use, but boys may use the remainder of the library space if available.



“Teaching and learning in the sixth form is outstanding.”

## ASSEMBLIES

Students are expected to attend one of the religious assemblies (Christian, Hindu, Jewish, Muslim, Sikh, Buddhist and non-faith) which take place on Tuesday and Thursday mornings and are encouraged to consider participating in leading assemblies.

On Wednesdays there is an assembly for the whole Sixth Form in the Hall. This also provides a forum when students may be briefed about important matters, such as procedures for university entrance. Attendance at this assembly is compulsory.

## OPPORTUNITIES FOR TAKING RESPONSIBILITY

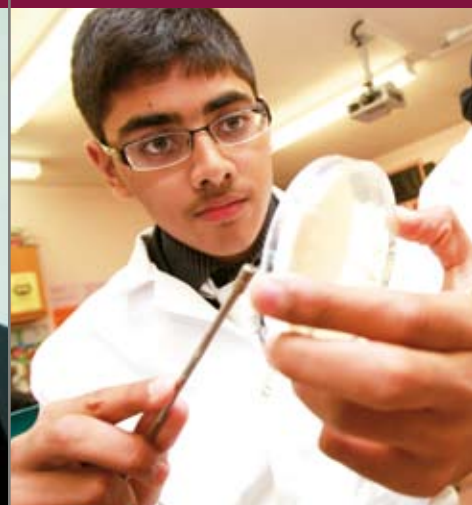
Members of Year 12, who have the potential to act as leaders in maintaining good standards of conduct and to give reliable assistance in the day-to-day running of the school, are invited to become prefects. All students in Year 12 are invited to join Community Teams and their commitment to these teams will be a good indication of their potential as prefects. There is also a Sixth Form Council which meets regularly to discuss issues of concern to the older boys.

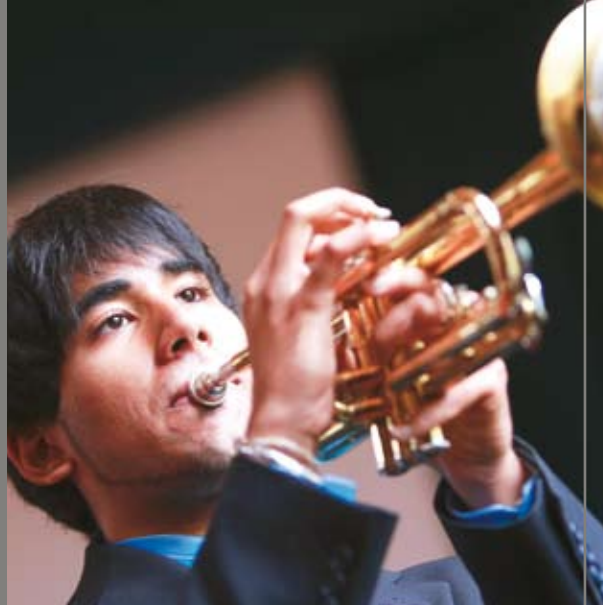
Prefects carry out a variety of duties. They may be asked, for instance, to help in the running of Parents' Evenings and school functions, or to conduct visitors around the school. The team of Senior Prefects is chosen during the Spring Term.

All Sixth Form students are encouraged to take advantage of opportunities to contribute to the wider life of the school outside academic study, and most do so successfully. Students may make a contribution in a number of ways, of which the following are examples:

- Organising and leading assemblies.
- Organising school clubs and societies, such as the Chess Club and the Debating Society, and helping to run sports activities, for instance, football coaching for younger boys' teams.
- Helping to run Parents' Evenings, and escorting visitors to the school.
- Participating in the scheme whereby Sixth Formers help lower school pupils improve their reading and literacy skills.
- Assisting with running the Learning Resource Centre.
- Accompanying school trips with younger boys, for instance, the annual Year 7 camping adventure.
- Participating in leadership training programmes provided for Sixth Formers.
- Taking part in various forms of community service, such as organising charity events, working in local primary schools, or working in hospitals as a preparation for studying medicine.

OFSTED 2007





OFSTED 2007

## REGISTRATION AND ATTENDANCE

Students are registered during all lessons. Students are required to register with their form tutor every morning at 8.40 am. They attend assembly at the end of Wednesday morning. When a student is absent from the school for any reason, we request that parents phone the school or write a note explaining the reasons for absence. If an absence is unexplained, parents will be contacted by the school.

Continuity of studies is of vital importance in the Sixth Form. Holidays in term time are not permitted. Similarly we restrict attendance at University open days to two per half term.

## UNIFORM

The uniform for sixth formers consists of a dark suit, and black or brown sensible shoes (not trainers or heavy boots), which we refer to as 'City Smart'. Outer coats need to be in plain, dark colours, without logos. Denim jackets are not permitted.

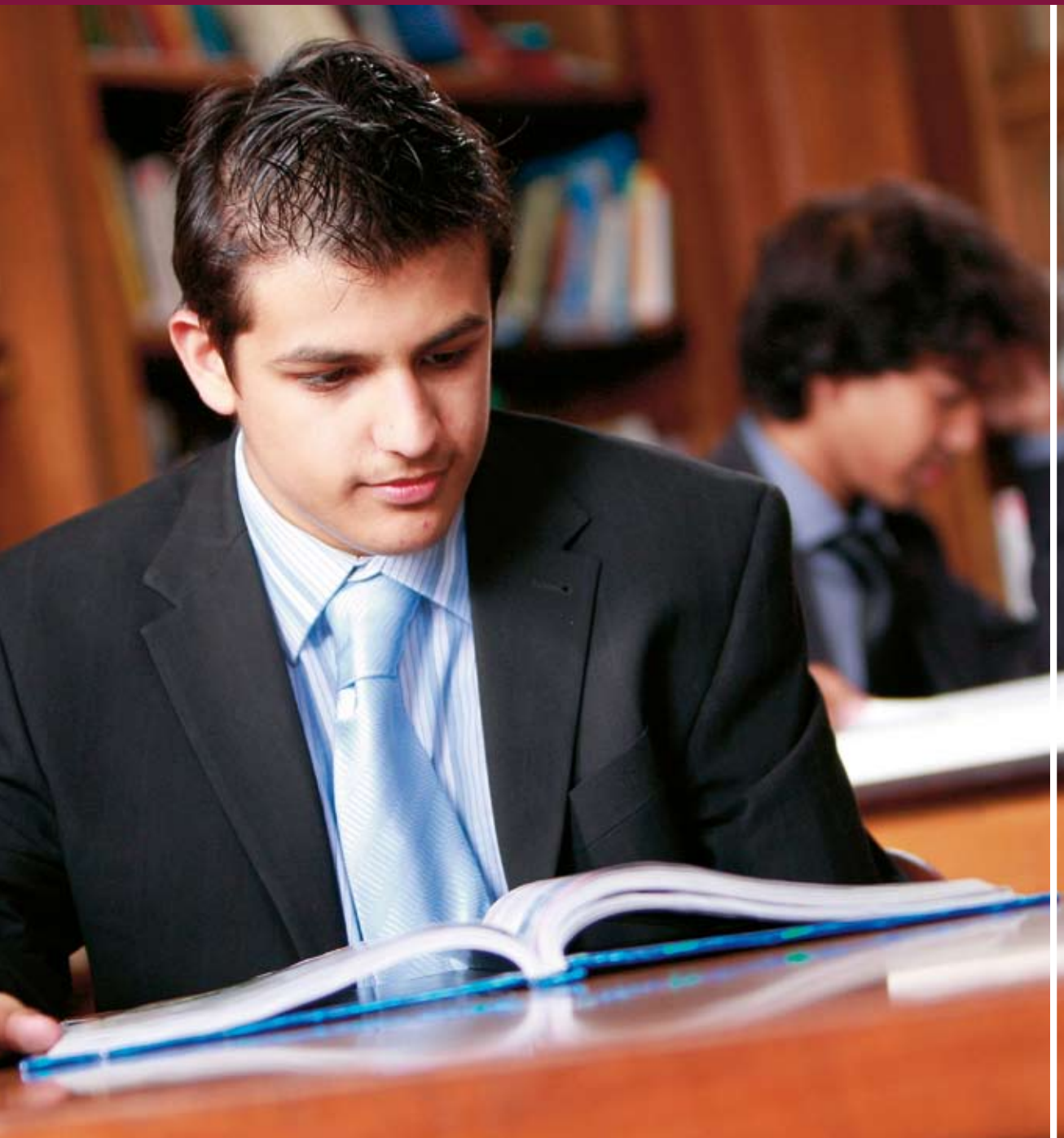


## HIGHER EDUCATION

The great majority (over 90%) of Sixth Form students go on to higher education, and there are close links between the school and many universities. Preparation for University entrance is a feature of the Personal, Health and Social Education (PSHE) programme, and students are given advice and practical help to enable them to make an effective university application. We encourage students to begin the process of university preparation early in Year 12, when each is assigned a personal UCAS tutor. A carefully structured programme then leads them through the process until their application is finally despatched in the autumn term.

“There are excellent relationships between staff and students.”

PAGES 6-7



## PHSE

In the Sixth Form the PHSE course concentrates on issues directly relevant to students' work and futures. There are modules covering interview skills, the university entrance system, and coping with life as a university student.

## CRITICAL THINKING

In Year 12 all students study AS Critical Thinking. Research suggests that not only does this develop vital skills of independent thought, but it also has a positive impact on grades in all other subjects. It is of particular importance in enriching the curriculum of those students following a diet of largely science subjects.

## CURRICULUM GUIDANCE

All students take Critical Thinking and four AS Levels in Year 12.

All students must achieve a C grade or better in Maths and English GCSE in order to enter the Sixth Form. In addition they must pass a minimum of 6 GCSEs with grades A\*–B, with a B in their chosen subjects. If they wish to study an A Level science and have done Double Science GCSE, they must achieve a Double A grade.

Entry to Year 13 is conditional upon students passing at least three AS subjects with grades that are broadly in line with the target set at the beginning of Year 12. (See the Course Directory for further details.) It is expected that they will study three A2 subjects, although in a small number of cases this may rise to four.

*"Students have excellent opportunities to develop their leadership roles."* OFSTED 2007

